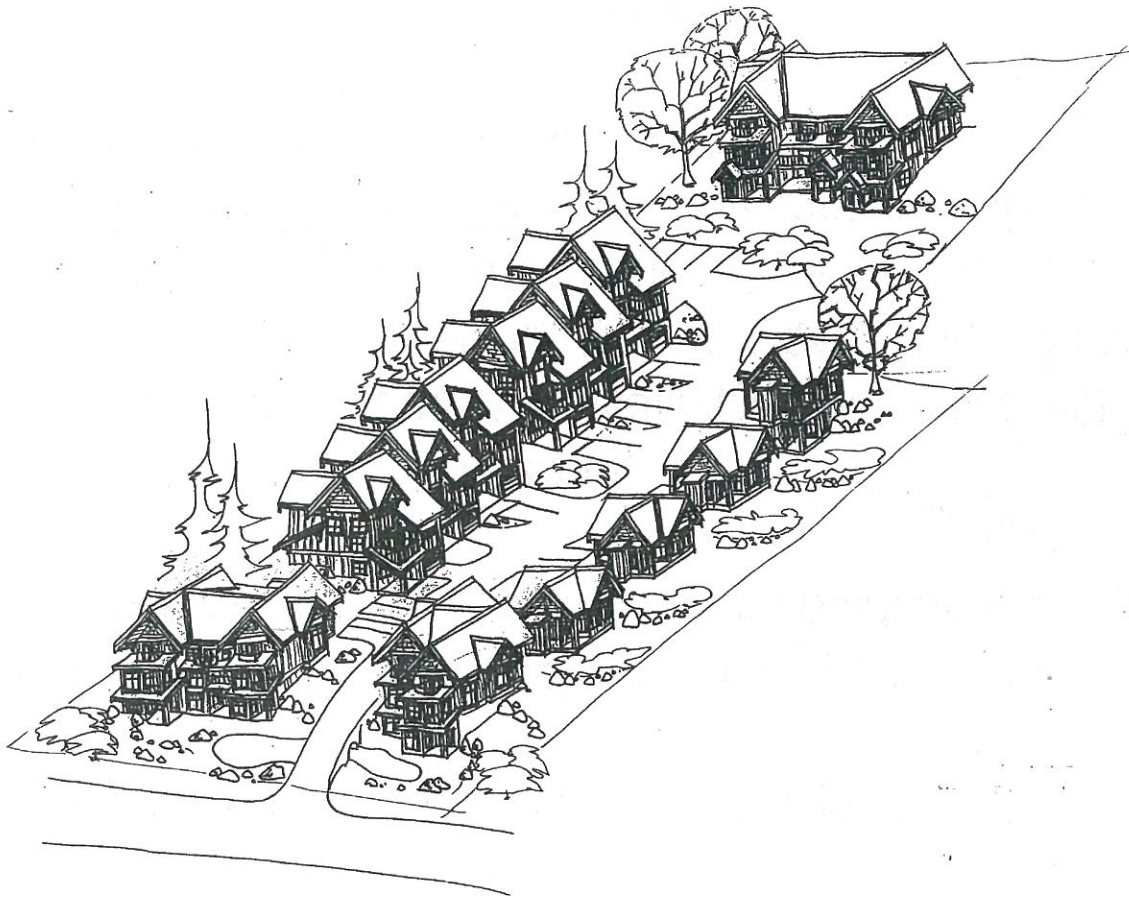




ISLAND VIEW LANES

19 DISTINCT VIEW TOWNHOMES

INCLUDING 5 LIVE/WORK UNITS & 4 SINGLE FAMILY DETACHED



Presented by:

RE/MAX® "top 20" Realty

Rob Jardine 604-886-2670 Anytime

The site is midway between The Landing and Upper Town. Ocean, Island and Mountain views out to the south and east. Phase 1 includes 4 plex, Phase 2 includes, 3 plex and two single family dwellings.

A combination of Hardy siding, sloping roofs, covered porches, and timber elements all contribute to traditional building types. All units have covered front entrances with additional private patios.

The finishings and features include hardwood & slate floors, granite counters, stainless steel appliance package, 9 ft ceilings, extra sound dampening between units, paving stone driveway and parking patios, 40 year roofing, low e windows with lifetime warranty, National Home Warranty.

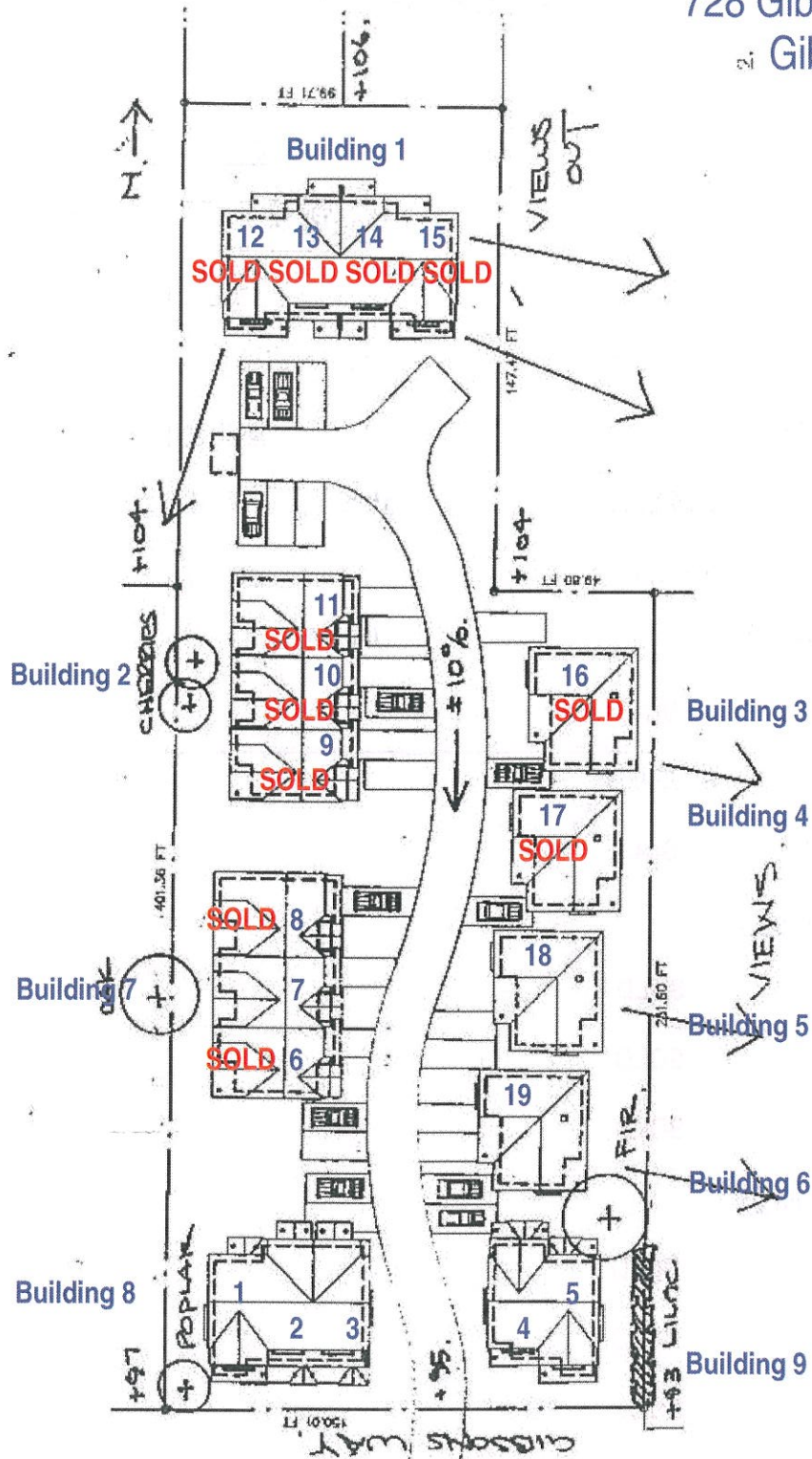
The landscaping moves up the slope in a series of levels providing both views and privacy areas for each unit.

Island View Lanes, a very unique development by Sunbelt Properties.

Rob Jardine 604-886-2670 Anytime

Price and Unit Number

Island View Lanes
728 Gibsons Way
Gibsons, BC



Sunbelt Properties Ltd
Longman Construction Ltd



Top 20 Realty
Rob Jardine 604-886-2670

Price List

Building 8

Unit 1, SL 15 \$ 369,000

Unit 2, SL 16 \$ 349,000

Unit 3, SL 17 \$ 359,000

Building 9

Unit 4, SL 18 \$ 349,000

Unit 5, SL 19 \$ 379,000

Building 7

Unit 6, SL 14 **SOLD**

Unit 7, SL 13 \$ 369,000

Unit 8, SL 12 **SOLD**

Building 2

Unit 9, SL 7 **SOLD**

Unit 10, SL 6 **SOLD**

Unit 11, SL 5 **SOLD**

Building 1

Unit 12, SL 1 **SOLD**

Unit 13, SL 2 **SOLD**

Unit 14, SL 3 **SOLD**

Unit 15, SL 4 **SOLD**

Building 3

Unit 16, SL 8 **SOLD**

Building 4

Unit 17, SL 9 **SOLD**

Building 5

Unit 18, SL 10 \$ 379,000

Building 6

Unit 19, SL 11 \$ 379,000



Top 20 Realty
Rob Jardine 604-886-2670